

Kishalay Foundation Brochure 2025

12+ YEARS IN SERVICE TO THE SOCIETY

Nurturing Early Minds Empowering Communities



Join hands for change. Together, we can make a difference.



[HTTPS://KISHALAYFOUNDATION.IN](https://kishalayfoundation.in)

ABOUT US

VISION

“To nurture a generation of joyful, confident and compassionate learners through play, sustainability and community-driven education empowering rural India to grow with equality, dignity and purpose”

MISSION

To create thriving rural ecosystems where every child learns through pure play, every woman leads with confidence and every community sustains itself through knowledge, care and nature.

VALUES

Non Discrimination, Collaboration, Empowerment, Accountability, Transparency, Integrity

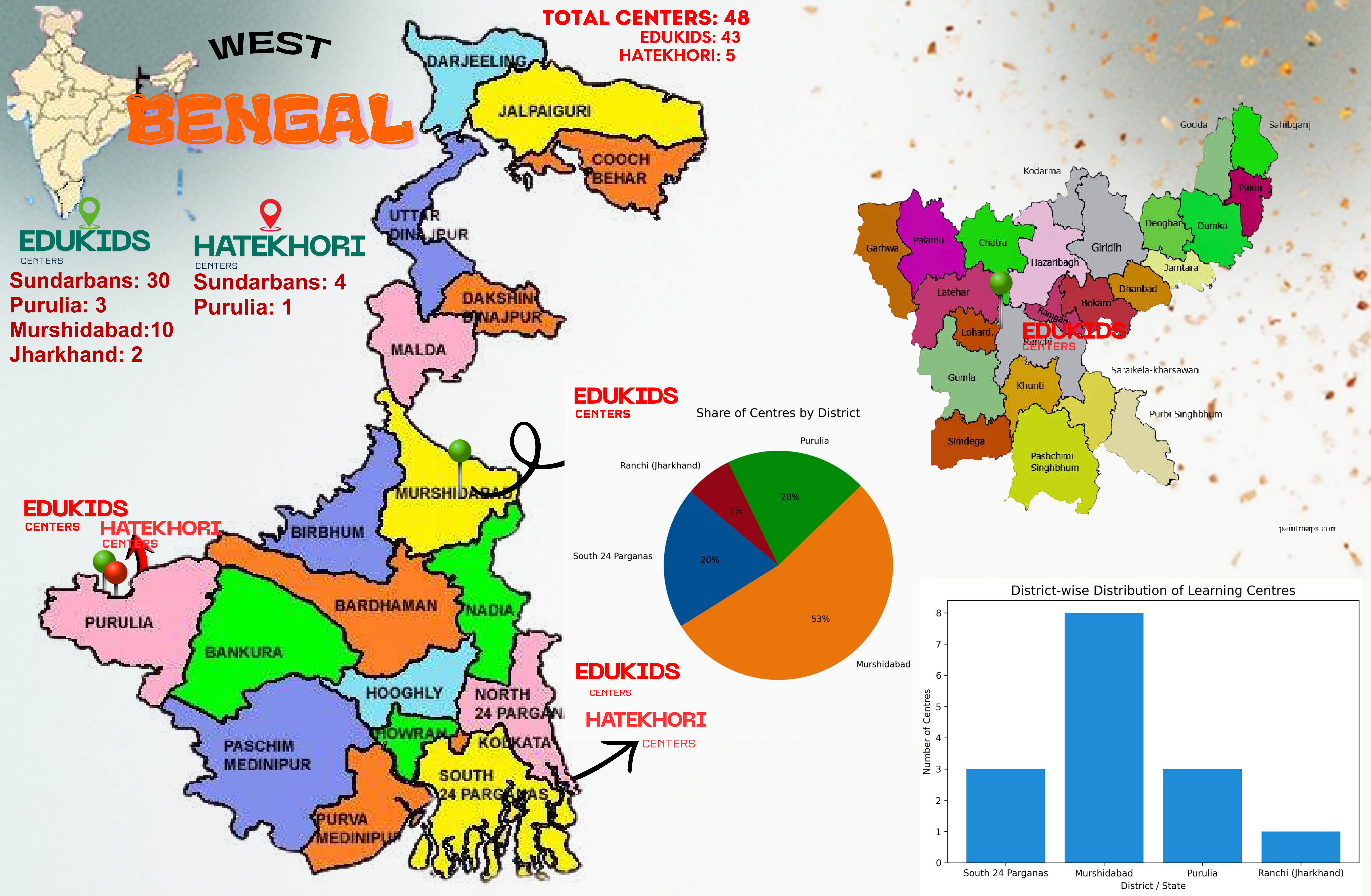


Founded in 2013, Kishalay Foundation is a community-driven, not-for-profit organization working at the grassroots to ensure that children in rural and underserved regions receive quality early childhood education, nutrition, care and protection. What began as a small initiative in government primary schools of the Sundarbans has grown into a trusted early childhood development movement across West Bengal and Jharkhand.

With 12+ years of field experience, Kishalay focuses on the critical early years (ages 3–8), when cognitive, emotional and social foundations are formed. Our approach integrates play-based learning, nutrition, women leadership, community ownership and climate resilience, ensuring long-term and scalable impact.

OUR OUTREACH & KEY PROGRAM

West Bengal & Jharkhand



OUR CORE PROGRAMS

Edukids & Hatekhori Learning Centers

- Foundational literacy & numeracy
- Play-based and experiential learning
- School readiness

Nutrition & Health Support

- Daily nutritious meals/snacks
- Growth monitoring & hygiene awareness

Women Empowerment

- Training local women as educators (Didis)
- Livelihood support & leadership development

Community & Climate Action

- Mangrove plantation for coastal resilience
- Organic agriculture and seed conservation
- Parent committees and community monitoring



OUR JOURNEY & LEADERSHIP

JOURNEY SO FAR

Since its inception, Kishalay Foundation has steadily expanded by building trust within communities and placing local women at the centre of change. Our centres operate as safe, joyful spaces where children learn through stories, music and movement and play while parents actively participate in the learning ecosystem.

A MESSAGE FROM THE FOUNDER

“Growing up in the Sundarbans, I witnessed how poverty and lack of early education limit children before their journey even begins. Kishalay was born to change that reality. Our greatest strength lies in our women educators and the communities who walk this path with us. Together, we are building strong foundations one child, one village at a time.”

— *Biplab Das, Founder*



OUR MODEL & IMPACT

OUR MODEL: HUB-AND-SPOKE APPROACH

- Central academic and training hubs
- Multiple community-based learning centres
- Ensures quality, consistency and scalability

PEDAGOGICAL FRAMEWORK

- Child-centric, play-based learning
- Inspired by Finnish pedagogy
- Supported by expert partners such as Nanritam NGO

WHY IT WORKS

- Strong community ownership
- Low-cost, high-impact delivery
- Locally trained women educators
- Sustainable and replicable model

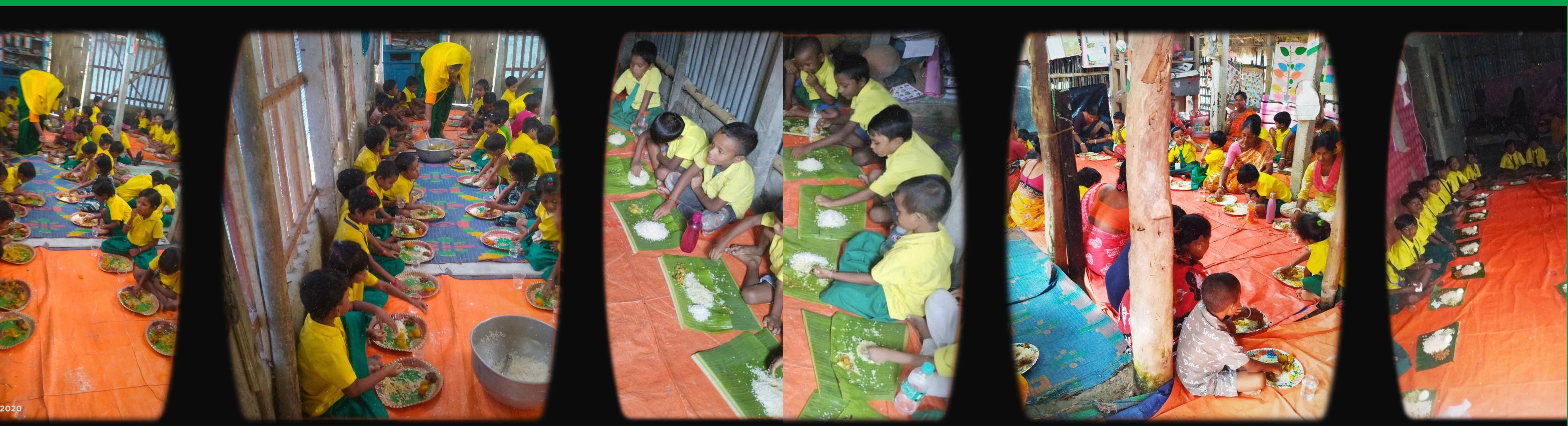
IMPACT HIGHLIGHTS

- **95%** improvement in foundational literacy levels
- **40%** reduction in child malnutrition
- Improved school readiness and attendance
- Increased community participation and parental engagement

THEORY OF CHANGE

Inputs → Activities → Strong Learning Foundations → Empowered Children → Thriving Communities





NO CHILD LEARNS HUNGRY: NOURISHING MINDS, NOURISHING FUTURES



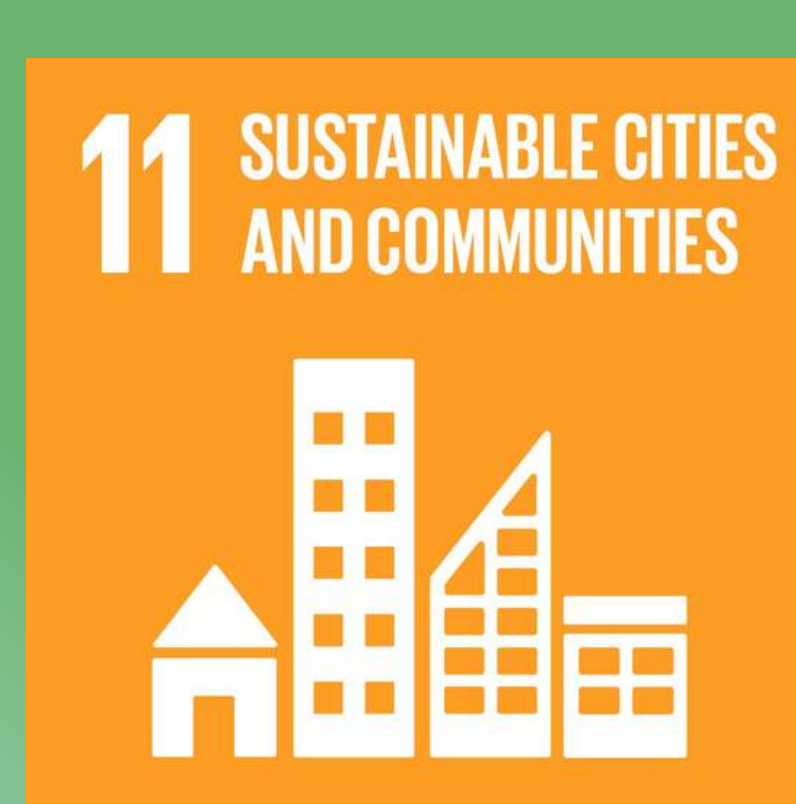
At Kishalay Foundation's EduKids and Hatekhori learning centres, nutrition is a core part of early childhood development. Across 15 centres in four districts spanning two states, we provide regular, age-appropriate nutritional support to ensure that young children are healthy, attentive, and ready to learn.

The programme addresses everyday hunger, supports physical growth and builds healthy food habits through nutritious meals, hygiene awareness and engagement with mothers and caregivers. By linking nutrition with play-based learning, Kishalay ensures that education is not limited to the classroom—but begins with a well-nourished body and mind. This integrated approach strengthens school readiness, attendance and overall well-being, giving children from marginalized communities a stronger and more confident start in life.



Our Contribution to the SDGs

- SDG 1 – No Poverty
- SDG 2 – Zero Hunger
- SDG 3 – Good Health & Well-being
- SDG 4 – Quality Education
- SDG 5 – Gender Equality
- SDG 6 – Clean Water & Sanitation
- SDG 8 – Decent Work & Economic Growth
- SDG 10 – Reduced Inequalities
- SDG 11 – Sustainable Communities
- SDG 12 – Responsible Consumption & Production
- SDG 13 – Climate Action
- SDG 15 – Life on Land
- SDG 17 – Partnerships for the Goals



BEYOND EDUCATION: INTEGRATED DEVELOPMENT

TACKLING MALNUTRITION

- Weekly and daily nutrition programmes at centres
- Nutrition awareness for mothers
- Community kitchens and farm-to-table linkages (scaling)



EMPOWERING WOMEN

- **99%** women-led educator workforce
- Skill development, leadership roles, and livelihoods
- Stitching units, organic food initiatives, and SHG engagement



SUSTAINABLE AGRICULTURE & ENVIRONMENT

- **100,000+** mangroves planted (Target: 500,000 by 2030)
- Organic farming in 50+ villages (Target: 250+)
- Rainwater harvesting and renewable energy pilots



These integrated interventions ensure that education outcomes are reinforced by health, nutrition, income security and climate resilience.

From climate-smart farms and nutrition security to conscious consumers, Kishalay Organic builds a sustainable food system rooted in community, care and resilience.

Climate Adaptive Natural Farming & Kishalay Organics

Kishalay Foundation promotes Climate Adaptive Natural Farming (CANF) to help small and marginal farmers respond to climate stress while ensuring safe, nutritious food for rural families. Through chemical-free cultivation, seed conservation, soil regeneration, water-efficient practices and community-led training, farmers are supported to reduce risk, improve yields and protect local ecosystems especially in climate-vulnerable regions like the Sundarbans.

Under Kishalay Organics, produce grown by women and small farmers using natural farming methods is curated, branded and promoted through local & New Town Organic Haats and market platforms such as Sufal Bangla Green initiatives, Govt. Of West Bengal. This initiative not only connects consumers with safe, traceable and sustainably grown food, but also strengthens farmer incomes, women's leadership and climate-resilient rural livelihoods.



PARTNERSHIPS, CREDIBILITY & CALL TO ACTION

TRUSTED & COMPLIANT

- Registered under Section 25 / Section 8, Companies Act
- 12A & 80G certified (tax exemption)
- CSR-1 registered with Ministry of Corporate Affairs
- NITI Aayog DARPAN registered
- Audited financials and transparent governance

OUR PARTNERS

Nanritam NGO, Aakar Innovations, Young Indians, Kolkata Gives, Mukti, Parivaar, Get Bengal, Milaap, and several individual philanthropists are among our valued partners and supporters. Our current CSR partners include Asite Solutions and Nextuple India Private Limited.

HOW YOU CAN PARTNER

- Sponsor early learning centres
- Support nutrition and health programmes
- Invest in women-led education and livelihoods
- Fund climate action and mangrove restoration

TOGETHER, LET US BUILD RESILIENT COMMUNITIES FROM THE GROUND UP

Every child deserves a strong start in life. At Kishalay Foundation, we create safe, joyful learning spaces, provide essential nutrition and empower local women so that young children in rural and marginalized communities grow with care, confidence and opportunity.

Working across the Sundarbans, Purulia, Murshidabad and rural Jharkhand, we integrate early childhood education, natural farming and climate action to build communities that are healthy, self-reliant and resilient. Our play-based learning centres prepare children for school, our women-led farming initiatives strengthen nutrition and livelihoods and our climate programmes protect fragile ecosystems. As we expand this work, we warmly invite like-minded partners to join us. Your support will help:

- Give children a confident and joyful start to learning
- Strengthen family nutrition and sustainable livelihoods
- Build climate resilience in vulnerable regions



Your support today can change a child's life forever.

Join us in nurturing young minds, empowering communities and creating lasting, community-led impact - one child at a time.

Contact Us

Website: <https://kishalayfoundation.in>
Email: kishalayfoundation@gmail.com
Phone: +91 86700 48913/ 747 764 0234